

Fig. 1: Timing Diagram (b/w)

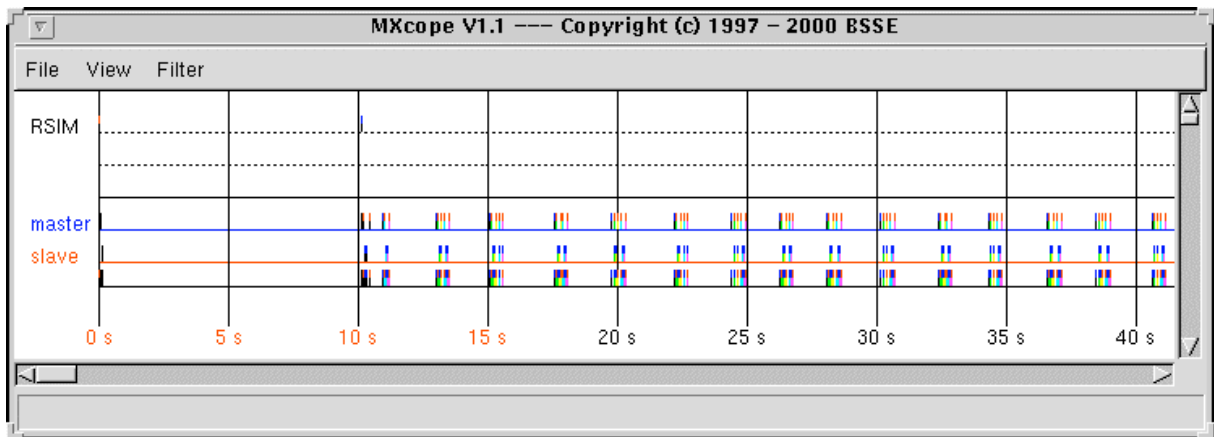


Fig. 2: Timing Diagram (coloured)

Colours may be generated automatically.
Information on colours may be saved and retrieved

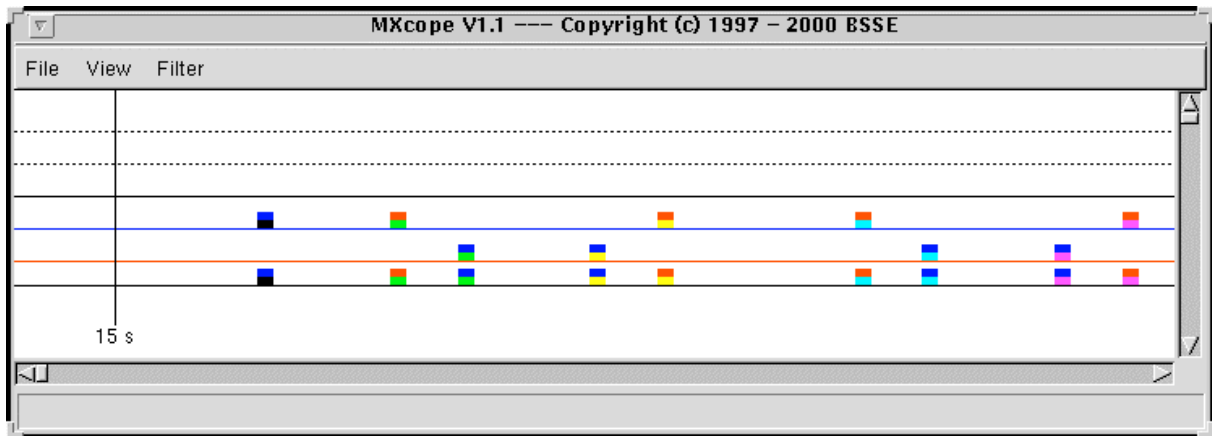


Fig. 3: Timing Diagram (zoom)

Line: blue Master
Red Slave

Events: upper part of vertical bar : colour of sending/receiving process
lower part colour of the message
arrow direction of data flow (colour according to sending/receiving process)

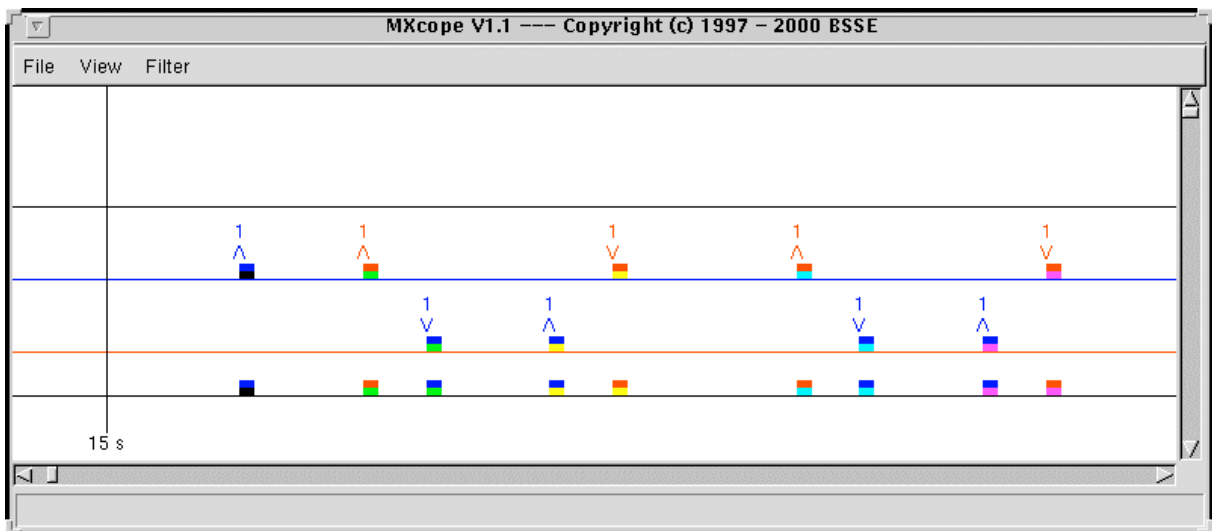


Fig. 4: Timing Diagram (+ data flow direction)

↑ send message
↓ receive message
Index instance number (from sending / to receiving instance)

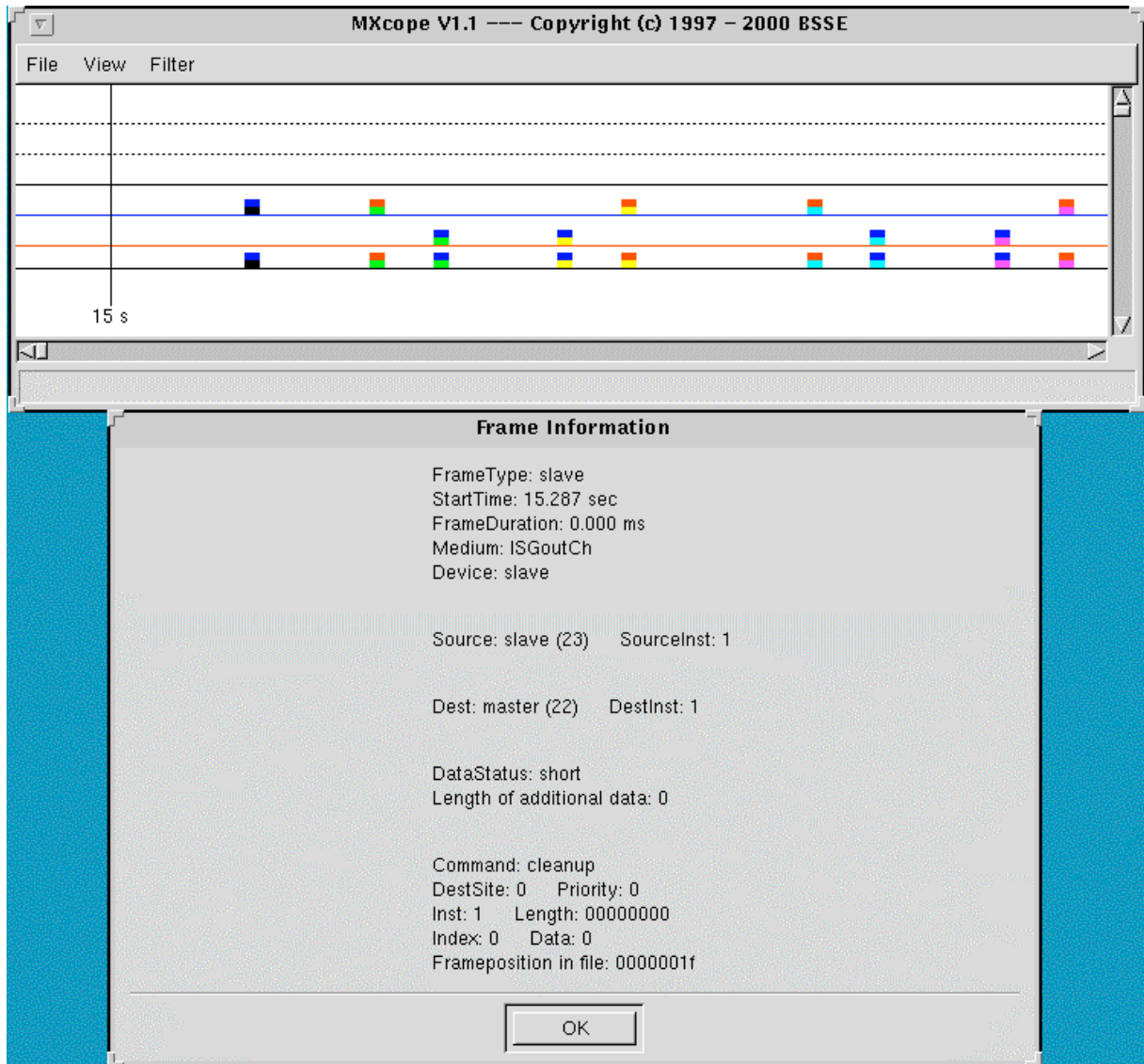


Fig. 4: Timing Diagram and Additional Details about Message

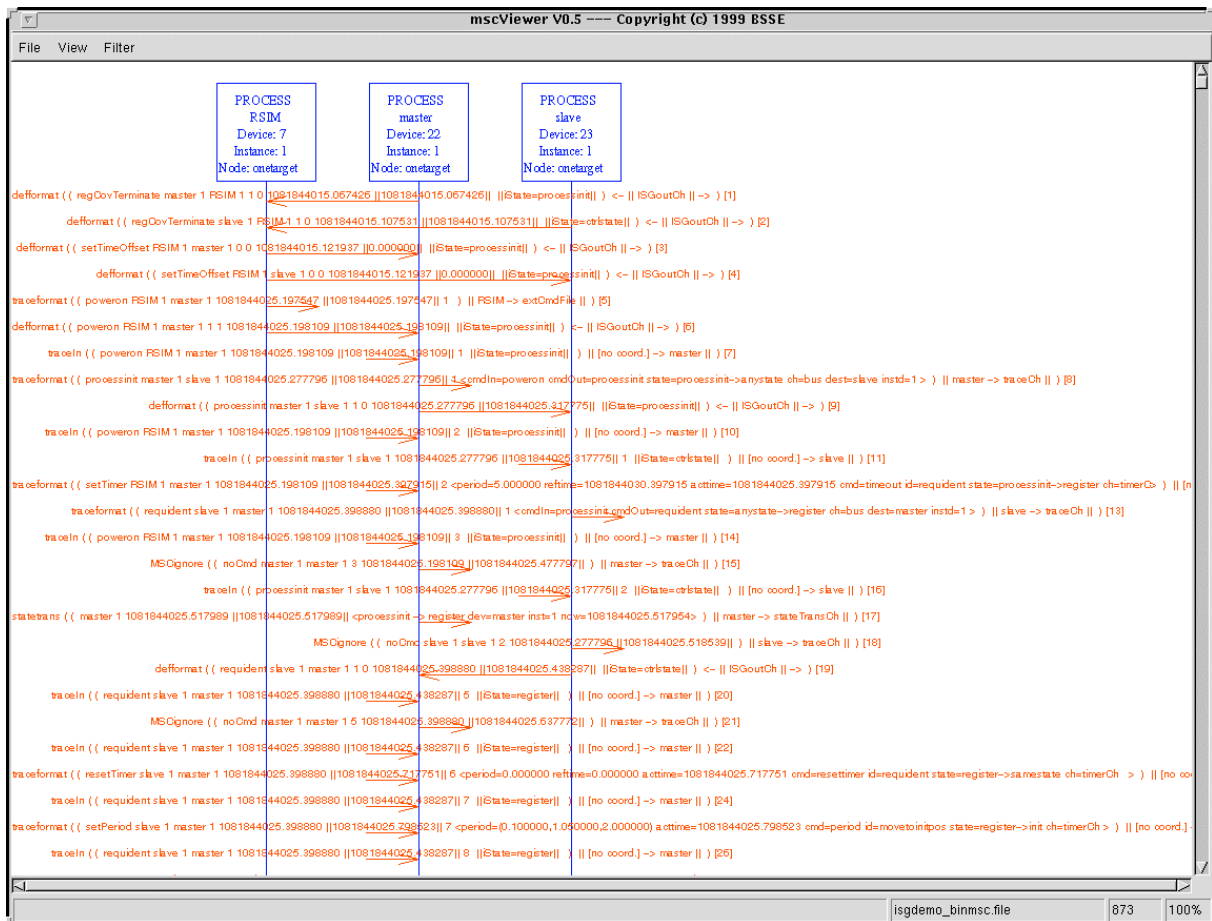


Fig. 5: Message Sequence Chart (MSC) (complete information) - Data Flow and Debugging Information



Fig. 6: MSC – messages only (message filtering applied)



Fig. 7: MSC – state transitions only (by message filtering)